



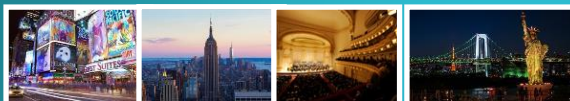
The Preferred Travel Provider for



PREPARED ESPECIALLY FOR:

**Patriot High School, CA**  
 NYC Performance Tour  
 March 21-25, 2019

YOUR TRAVEL EXPERIENCE BEGINS HERE



ARTIST TRAVEL CONSULTANTS

250 West 57th Street, Suite 918  
 New York, NY 10107  
 Phone: (212) 707-8170

**ACCOMMODATIONS**

Round-trip coach airfare between **Los Angeles, CA (LAX)** and New York City \*ESTIMATED  
 Round trip Private Group Airport Transportation from NYC Airport and NYC Hotel  
**FOUR** Nights Hotel Accommodations at mid-town hotel  
 Hotel is within walking distance of Times Square, DCINY Rehearsals, and performance Venue

**TRAVEL**

Air & Land	QUAD (2 beds - 4 people)	TRIPLE (2 beds - 3 people)	DOUBLE (2 beds - 2 people)	KING DOUBLE (1 bed – 2 people)	SINGLE (1 bed – 1 person)
Price Per Guest*	\$760	\$840	\$990	\$990	\$1430

*The above prices are in USD, per person, include all hotel taxes, mandatory baggage handling fee at hotel (one suitcase per person), luggage storage, gratuities and service charges. All hotel guest rooms have either One King Bed or Two Double Beds per room. Additional Nights are sold on a first come / first served basis and are not guaranteed until confirmed by the travel consultant. **Package price does not include airline-imposed checked luggage fees.** It is the responsibility of all the travelers to have the proper documentation to travel domestically or internationally. Please contact your local authorities or embassy as needed.*

**PLEASE SEE PAGE TWO (2) FOR SPECIFIC CANCELLATION POLICIES.**

**PACKAGE OPTIONS**

<b>STUDENT</b>	<b>STANDARD</b>	<b>PREMIUM</b>
For an additional \$275 USD p/p: (1) Broadway show ticket (1) Sightseeing Activity (2) Group Meals (1) 4-Trip Subway Pass	For an additional \$295 USD p/p: (1) Broadway show ticket (1) Sightseeing Activity (2) Group Meals (1) 4-Trip Subway Pass	For an additional \$350 USD p/p: (1) Premium Broadway show ticket (1) Sightseeing Activity (2) Deluxe Group Meals (1) 4-Trip Subway Pass

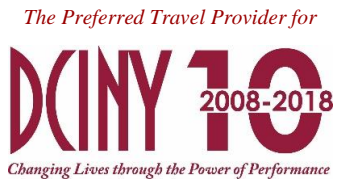
**Group Meal Options** include but not limited to: Applebees; Applejack Diner; BB Kings; Bubba Gump; Buca di Beppo; \*Carmine\*; Earl Sandwich; \*Ellen's Stardust\*; Hard Rock Cafe; \*Morton Williams\*; Naples 45; Planet Hollywood; Sbarro; Tick Tock Diner

**Sightseeing Options** include but not limited to: 9/11 Memorial Museum; Empire State Building; Museum of Natural History; One World Observatory; Statue of Liberty/ Ellis Island; \*The RIDE\*; Top of the Rock Observatory

*If there is something that you would like to see that is not on the list, please let us know.*

*\*Options listed with asterisk are available with upcharge\**

**INITIAL DEPOSIT OF \$150 PER PERSON**



## THE BENEFITS OF GROUP TRAVEL

One of the greatest benefits to booking group travel through ATC, is to save you; the Faculty Member, Choir Director, and/or Professor the time and hassle of handling the booking on your own, additional benefits include:

- Seat Count Reduction w/o penalty or charge (Group must maintain 10+ passengers).
- Your group will work with a dedicated IATA certified agent for personalized service. This agent is a direct contact, someone who knows the industry and can work on your reservation should any questions or complications arise.
- All of our agents are familiar with the hotels they fill; each have dined at the restaurants they recommend and have experienced the tours they book. All to say that our agents are very comfortable accommodating your arrangements, and upon request can make suggestions, specifically to compliment your DCINY experience.
- Artist Travel Consultants have provided travel arrangements for thousands of DCINY Alumni and has the experience and relationships to ensure your travel is safe, manageable and comfortable.

## ATC DEPOSIT AND CANCELLATION POLICY

The initial \$150 deposit is non-refundable. Cancellations prior to the 2nd deposit or 5-months prior to arrival, whichever is later, can be applied to the total balance. 90 Days prior to arrival the deposit is transferable only if a replacement is found. If no replacement is found the deposit is forfeited.

**Air Travel** - Once contracted, the cut-off date to make changes to the number of airline tickets is 90 days prior to the date of event. Ticketed flights are not refundable. An increase in the amounts of seats from initial contract will be based on availability and subject to a rate increase. Final airline itineraries and e-tickets will be confirmed 30 days prior to arrival.

**Hotel Cancellation** - Guests rooms reserved from your initial deposit can be amended up to 90 days prior to the event. Theatre Tickets, Sightseeing Tickets, and Dinner Reservations that are purchased on behalf of your group are 100% non-refundable.

**ATC strongly suggests Domestic groups within the US, to purchase trip protection for travel arrangements and events booked through ATC.**

**Speak with your ATC agent about travel insurance options available for your participants.**